

Tools for involvement

-experiences of involvement of farmers and finding common solutions.

How to strengthen water environmental cooperation in smaller catchments?

Experiences from "Collective Start-up Meetings" in relation to constructed wetlands.

SEGES Promilleafgiftsfonden for landbrug

STØTTET AF



Interreg
North Sea Region
WaterCoG
European Regional Development Fund



EUROPEAN UNION



Collective start-up meetings

How to make farmers think common solutions.

One farmer in a group needs to establish a constructed wetland - one for the team!

Our hypothesis was that trust between stakeholders and appreciation between farmers improve possibilities for common solutions.

Collective start-up meetings in ID15 catchments

The catchment: Denmark is divided into small catchments - approximately 1500 ha each – ID15 catchments.

The meeting: The catchment officer invites 5 to 15 farmers for a 2 hour meeting on the local Pub

Agenda:

- 1: Welcome, by the local Farmers Union chairman + older, acknowledged crop advisor
- 2: Knowledge about constructed wetlands and other measures by the catchment officer
- 3: Knowledge about the ID15 catchment, environmental challenges, landscape etc.
- 4: Farmers draw their drainpipes and ditches on the poster size foto of the catchment
- 5: Farmers discuss possible solutions.

After the meeting: Catchment officer visits the relevant individual farmers

2: Knowledge about end-of-pipe solutions



Collective start-up meetings in ID15 catchments

The catchment: Denmark is divided into small catchments - approximately 1500 ha each – ID15 catchments.

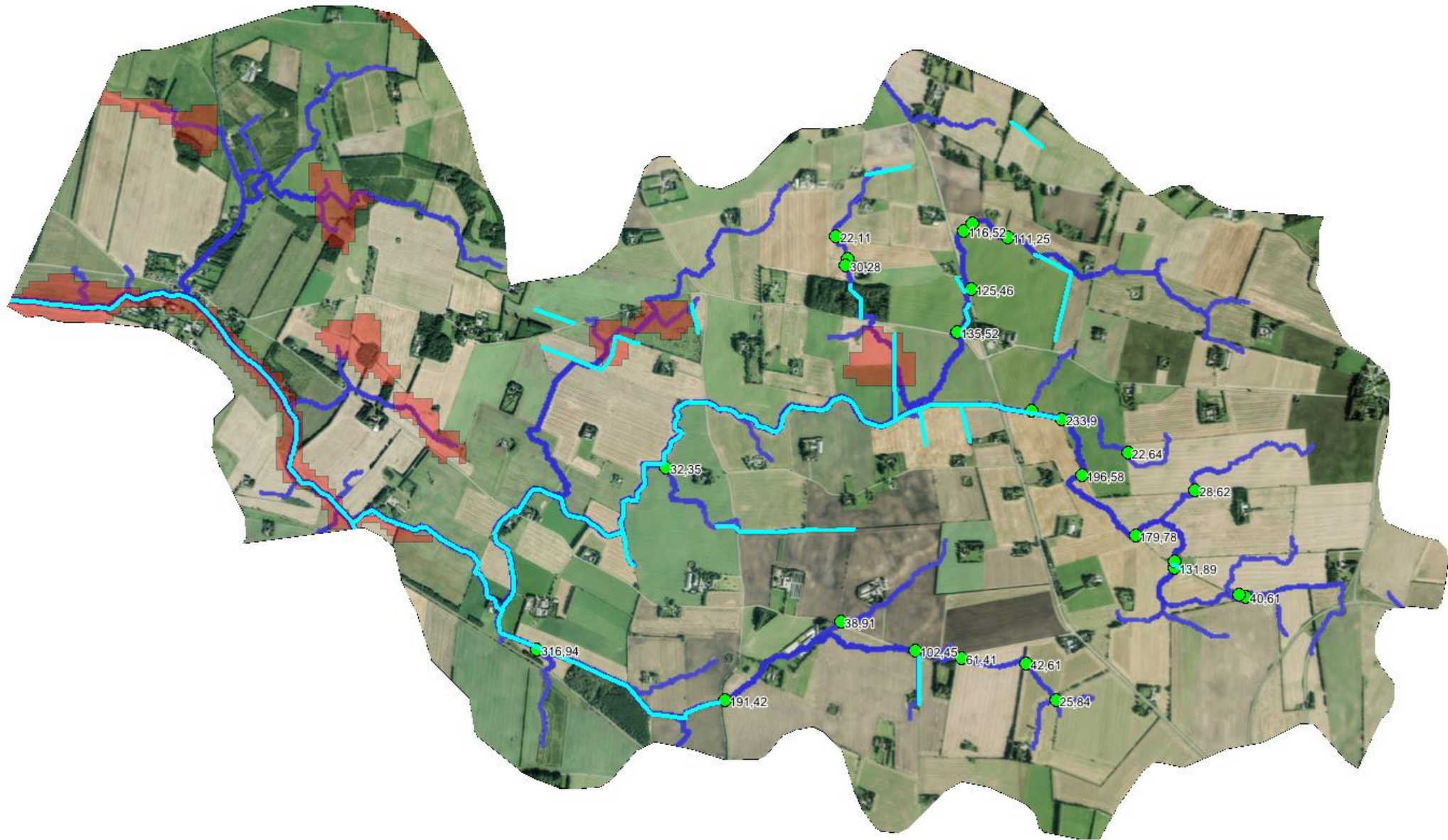
The meeting: The catchment officer invites for a 2 hour meeting on the local Pub

Agenda:

- 1: Welcome, by the local Farmers Union chairman + older, acknowledged crop advisor
- 2: Knowledge about constructed wetlands and other measures by the catchment officer
- 3: Knowledge about the ID15 catchment, environmental challenges, landscape etc.
- 4: Farmers draw their drainspipes and ditches on the poster size foto of the catchment
- 5: Farmers discuss possible solutions.

After the meeting: Catchment officer visit the relevant individual farmers

3: Knowledge about landscape, environmental challenges etc.



Collective start-up meetings in ID15 catchments

The catchment: Denmark is divided into small catchments - approximately 1500 ha each – ID15 catchments.

The meeting: The catchment officer invites for a 2 hour meeting on the local Pub

Agenda:

- 1: Welcome, by the local Farmers Union chairman + older, acknowledged crop advisor
- 2: Knowledge about constructed wetlands and other measures by the catchment officer
- 3: Knowledge about the ID15 catchment, environmental challenges, landscape etc.
- 4: Farmers draw their drain pipes and ditches on the poster size foto of the catchment
- 5: Farmers discuss possible solutions.

After the meeting: Catchment officer visit the relevant individual farmers

4: Farmers knowledge, drawing the drainage systems – finding solutions



Results from the meetings

Motivation:

- Individual farmers with best locations for wetlands are willing to take "one for the team"

Quality:

- The constructed wetlands are placed in the best locations and in correct dimensions

Efficiency:

- Fast lane to relevant landowners and creation of motivation and ownership from the social group of farmers.

Why do collective start-up meetings work?

- **Trust** — by local chairman and crop advisor
- Common **knowledge of the farmers** is **integrated directly and immediately in the discussion**. The Farmers' knowledge is just as important as the knowledge of the environmental authorities.
- The farmers can achieve **appreciation immediately on the meeting**.

Why do collective start-up meetings work?

Landscape

- Tacit, silent knowledge between farmers. Identity of family and the business throughout generations is literally dug into the soil!

Identity

- New identities can freely be tested and achieve appreciation by the professional community of the farmers.

Community

- Change finds place when the individual farmer is sure, that the community of farmers appreciates the effort of the individual.

Perspectives for Collective Start-up Meetings

When common solutions are needed – and there is no immediate relation to better economy for the farmer

- Water environmental measures in a broader sense
- Nature
- Climate
- ...

SEGES

